



NGARUAWAHIA HIGH SCHOOL
Te Kura Tuarua O Ngaruawahia

PROSPECTUS





FROM THE PRINCIPAL

Ko te manu e kai ana i te miro, noona te ngahere. Engari, ko te manu e kai ana i te maatauranga, noona te ao.

The one who partakes of the flora and fauna, that will be their domain. The one who engages in education, opportunities are boundless.

He hoonore, he korooria ki te atua.

He maungaarongo ki te whenua.

He whakaaro pai ki ngaa taangata katoa,

Paimaarire.

Ko te kupu tuatahi, me wehi ki a Ihowaa.

Ko te tuarua, me mihi ki too taatou Kiingi a Pootatau Te Wherowhero te tuawhitu, ko Tuuheitia, tae noa atu ki te whare kaahui arikinui tonu.

Me mihi hoki ki ngaa mate kua wehe atu ki te poo, haere, haere, haere atu raa.

Noo reira, ka aapiti hono taatai hono raatou ki a raatou, taatou te hunga ora ki a taatou,

Tihei Mauri ora!

Ngaruawahia High School is a unique kura, which has provided the families of Ngaruawahia and the surrounding areas with quality co-educational education for over 50 years. As a school, we embrace the spirit of te Tiriti o Waitangi and encourage bi-cultural and multi-cultural perspectives.

It is the right of every student to enjoy an education based on values that promote personal excellence and success in all areas. We encourage our community to empower each other through whanaungatanga, manaakitanga and kotahitanga.

At Ngaruawahia High School, our students are our priority. We have a clear vision of an innovative learning environment where learning is relevant and encompasses a range of curriculum areas and the key competencies. We recognise that student needs drive our learning programmes, which also adhere to the New Zealand Curriculum.

Learning can be co-constructed with students, inquiry-based and pursued through authentic contexts. At Ngaruawahia High School, we understand that learning is no longer simply the memorisation of concepts and curriculum, but an active process whereby students participate fully to gain transferable skills that will make them successful citizens. This is achieved through personalised learning programmes designed to meet the individual needs and interests of every student.

As a small school, your child will not simply be a number - we strive to know and understand our students in order to best meet their educational needs.

We look forward to you and your family joining us.

Chris Jarnet

PRINCIPAL





SCHOOL CREST

The crown on top of the crest signifies the allegiance of our school to the Queen, as head of the British Commonwealth, while the two rivers (Waipa and Waikato) joining into one symbolises the integration of Maaori and Pakeha.

Seven districts contribute students to the school and each star represents a contributing district. These districts are Glen Massey, Orini, Horotiu, Taupiri, Te Kowhai, Waipa and Ngaruawahia.

The three books represent:

- The Bible as the foundation of our faith;
- The knowledge we are learning;
- The history we are helping to make.

Translated literally, the motto “Wahia Ngarua” means open the food pits. This goes back to the 17th Century when Ngahere, the son of a Waikato chief, married Heke I te Rangi against the wishes of her father, a chief of Ngati Maniapoto. When a son was born to them it was decided to hold a feast and invite the Ngati Maniapoto. The invitation was accepted and following the welcome, Ngahere’s father held up the baby saying that he named it Te Mana o te Rangi in honour of the reconciliation with Ngati Maniapoto. Ngahere then arose and called out “Wahia Nga Rua”. From these words, Ngaruawahia was coined.



BOARD OF TRUSTEES & CHARTER

BOARD OF TRUSTEES:

TRUSTEES

Rangimarie Poutapu, Anne Ramsay, Maatai Ariki Kauae Te Toki, Opal Higgins, Matutaera Herangi, Megan Vernall (staff trustee), Chris Jarnet (Principal)

The Board of Trustees makes a commitment to the vision, mission and values of Ngaruawahia High School. Through the charter and strategic intents, we work hard to realise our potential as our community's kura of choice.

We aim to provide the aakonga of our local community with a variety of academic, sporting, artistic and cultural opportunities. This allows all students to reach their potential and see their dreams and aspirations through to reality.

Our Board of Trustees is made up of community members who have varied life experiences, both in and outside of the work place. This experience gives our kura the opportunity to continue to move forward and consistently improve our governance and practice.

CHARTER INTENT

STRATEGIC INTENT ONE

Responsive Connections

All students will benefit from strong, reciprocal relationships between the following stakeholders:

- Students
- Staff
- Whaanau
- Board of Trustees
- Community
- Iwi

These relationships will ensure that the hauora and safety needs of all are recognised and met.

STRATEGIC INTENT TWO

Responsive Outcomes and Opportunities

All students will progress in their learning journey, being empowered to make decisions about their pathway.

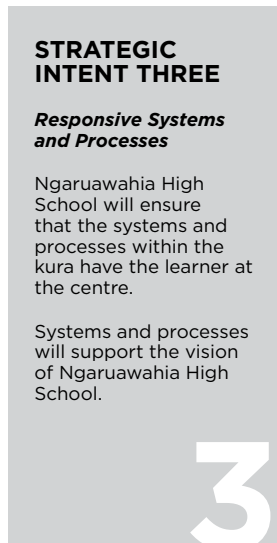
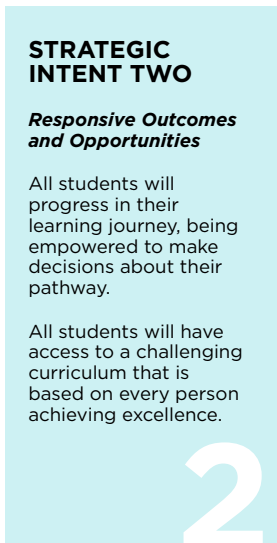
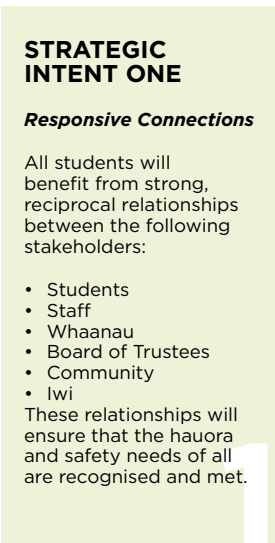
All students will have access to a challenging curriculum that is based on every person achieving excellence.

STRATEGIC INTENT THREE

Responsive Systems and Processes

Ngaruawahia High School will ensure that the systems and processes within the kura have the learner at the centre.

Systems and processes will support the vision of Ngaruawahia High School.





VISION, MISSION & VALUES

VISION

Ngaruawahia High School will be our community's school of choice by providing a future focused, global education empowering all.

MISSION

Tuupara te hoe kia kotahi ai taatou

Our mission statement is a whakataukii that symbolises our shared direction and determination to work together to best support our Kura's goals. It can be translated as 'paddling in unison'. Achieving this requires leadership, strategy, skills and collaboration to make progress effectively and efficiently.

VALUES

Whakamanahia ai taatou maa te:
(To empower our people through:)
whanaungatanga, manaakitanga me te kotahitanga



STUDENT LEADERSHIP

Student Leadership is an important aspect of Ngaruawahia High School's culture. We believe that our kura belongs to our students and encourage them to step up and lead in many ways. As our students grow throughout their learning journey, it is important that they are also developing leadership skills, which can take many forms.

These leadership opportunities include:

- modelling the vision, mission and values of our kura
- junior student leadership group
- student council
- Board of Trustees student representative
- ball committee
- Head Girl and Boy
- coaching junior sports
- leading action groups within class
- outdoor experience leader



HUB GROUPS

It has become clear in current research that if students have a 'significant adult' that they are able to relate to, then they are far more likely to succeed in their formal education. The HUB system at Ngaruawahia High School aims to give both whaanau and students a point of contact within the kura.

The purpose of HUBs at Ngaruawahia High School is:

- to ensure students feel a sense of identity and belonging
- to develop meaningful relationships for students with their HUB Mentor; and for the HUB Mentor with whaanau
- to facilitate the continual development of our community of learners

STUDENT & WHAANAU SUPPORT

Our student support network is comprehensive and aims to support both our aakonga and whaanau to ensure each student finds success. Our support network includes:

- Junior Pastoral Leader
- Senior Pastoral Leader
- Guidance Counsellor
- Health Nurse and Doctor
- Career Guidance
- Attendance Services
- Special Educational Needs Coordinator
- Outside social agencies





TEACHING & LEARNING

Staff at Ngaruawahia High School are committed to professional learning and development to best meet the needs of our aakonga. It is no longer acceptable to continue with the outdated 20th Century one-size-fits-all approach and New Zealand teachers are being challenged to develop more effective, personalised teaching practices, based on evidence from research.

Due to much more research in the field of learning and the brain, we now have a much clearer picture of what happens in the brain when we learn. From this research, we know that quality learning occurs when it is:

- **Personalised**
The way we learn is unique and based upon our prior knowledge and experiences. Each person learns new skills and knowledge in different ways.
- **Socially Constructed**
A deeper understanding of the material being covered or the solution found to a problem results when students work collaboratively and with reciprocal teaching.
- **Differentiated**
Because each student comes into learning with a different set of prior skills and knowledge, they require different levels of content, context, challenge and pace.
- **Student Initiated**
When a learning experience is sparked by a student, they learn more.
- **Connected**
If a student is able to connect their learning in an authentic manner to the real world, deeper learning occurs.

Students who need additional support or extension in their learning are given this through our special educational needs team. This could involve learning new strategies, working with a teacher aide, having resource teacher for learning and behaviour support, and through many other avenues.



JUNIOR SCHOOL

Our junior school curriculum is unique and challenging, designed to equip students for today's rapidly changing society by teaching skills such as critical thinking, innovation and collaboration.

MASTERY:

Year 9 and 10 students are placed in mixed ability classes that focus on ensuring students master the skills involved in English, Science, Mathematics and Te Reo Maaori. The expectation is that during this time there is high repetition and practice of the subject skills defined by the curriculum and progress level of the student.

SOCIAL INQUIRY:

These classes are based on an inquiry model, allowing students to delve into large projects as a team. Students are able to direct their own part of the process and are team taught, utilising workshops

and breakout times.

ARTS AND TECHNOLOGY:

All Year nine students experience our arts and technology subjects as 'tasters' for five to six weeks each throughout the year. This gives students an understanding of each option subject available.

Year 10 students choose two option subjects; one for the first half of the year and one for the second. Students should take subjects they enjoy, as this will set them up well to transition into the senior school.

HAUORA:

Students have opportunities throughout the year to learn about various aspects of Health and Physical Education. These include motor skill development, exercise science, reflective practices, building safe relationships with others and sexuality education.

TIKANGA

All students participate in our weekly Tikanga programme to strengthen their knowledge and understanding of Waikato-Tainuitanga.



SENIOR SCHOOL

The senior school has three main features:

- UNIVERSITY PATHWAY**
 We retain a strong academic strand, which prepares students for University and other degree level study
- INDUSTRY PATHWAY**
 We have a wide range of courses that allow students to gain credits in a number of employment-related areas. This gives students a head start when moving to a polytechnic or to other training institutions after leaving Ngaruawahia High School
- PERSONALISATION**
 Students are able to study at different levels in the senior school and across both of the above pathways according to their needs and ability

THE NATIONAL CERTIFICATE OF EDUCATIONAL ACHIEVEMENT

Each level of the NCEA has different requirements, as detailed below. Students could be working across any of these levels at any point in their learning journey.

	CREDIT REQUIREMENT	LITERACY/NUMERACY REQUIREMENT
NCEA LEVEL 1	80 credits at any level	10 literacy credits at Level 1 10 numeracy credits at Level 1
NCEA LEVEL 2	80 credits, of which a minimum of 60 credits is at level 2 or above	10 literacy credits at Level 1 10 numeracy credits at Level 1
NCEA LEVEL 3	80 credits, of which a minimum of 60 credits is at level 3 or above	10 literacy credits at Level 1 10 numeracy credits at Level 1
UNIVERSITY ENTRANCE	Attain NCEA Level 3 14 credits at Level 3 in each of three subjects from the 'approved subject list'	10 literacy credits at Level 2 or above - 5 in writing and 5 in reading 10 numeracy credits at Level 1

A group of students in black athletic wear are running on a green field. The image is partially obscured by a white diagonal shape.

CO- CURRICULAR ACTIVITIES

Ngaruawahia High School actively encourages students to be involved in the wide range of sports, arts and cultural activities on offer. These activities are driven by student interest and our specific opportunities change, dependant on student's wishes.

It is our view that by participating in sports, arts and cultural activities, we will enable students to learn about teamwork, sportsmanship, mutual trust among peers and work ethic, which can translate back into positive learning relationships in the classroom.







OUR UNIFORM

Every student who enrolls at Ngaruawahia High School agrees to wear our school uniform correctly. Our uniform is a vehicle through which we can enhance unity and give a sense of belonging in our kura. Uniform is available from The Warehouse in Te Rapa with the exception of the Physical Education uniform, which is able to be purchased from the school office.

The official uniform approved by the Board of Trustees is as follows:

FOOTWEAR

Winter: Closed, flat, completely black shoes, including laces and soles. Shoes may be fabric or leather. Boots and high top shoes are not acceptable.

Summer: Completely black, open-toe sandals with a back strap.

HOSIERY

Students may wear plain black socks or plain black pantyhose.

SKIRT

Regulation black A-line skirt

SHORTS/TROUSERS

Regulation black shorts or black trousers.

SHIRT

Regulation short or long sleeve blouse or shirt. Any clothing worn underneath must not be seen.

JERSEY AND JACKET

Regulation green woollen jersey or vest and/or school jacket.

PHYSICAL EDUCATION

Regulation Ngaruawahia High School PE shorts and singlet.

HATS

A regulation school beanie or bucket hat is available. School hats are to be worn outdoors only.

SCARF

A regulation, embroidered scarf may be worn.





NGARUAWAHIA HIGH SCHOOL

Te Kura Tuarua O Ngaruawahia

56 Kent Street, Ngaruawahia 3720 • PO Box 136, Ngaruawahia 3742

P. +64 7 824 8729 • **F.** +64 7 824 8727 • **E.** admin@ngaruawahiahigh.school.nz

www.ngaruawahiahigh.school.nz